

Comfortably furnished 3-room apartment with balcony and winter garden in Berg am Laim

short-term rental apartment	Rent incl. add. costs 2.200,00 EUR per Month	Living space ca. 65,00 qm	Number of rooms 3,0	Available from 01.08.2024
-----------------------------	---	------------------------------	------------------------	------------------------------

Other dates

District	Berg am Laim
Deposit	5.600,00 EUR
Floor	2.Floor
Available until	31.05.2025
Minimum rental length	182 days
Maximum number of tenants	2
Smoking / Nonsmoker	Non-smokers only
Balcony	yes
Elevator	Yes
Garden	No

Facilities

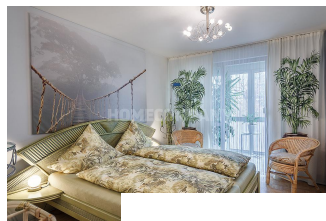
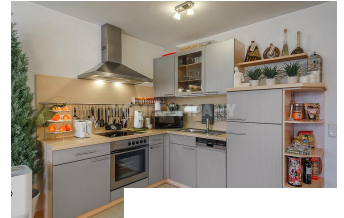
- | | |
|----------------------------|-----------------|
| - suitable for allergic .. | - study |
| - bathroom with bath tub | - balcony |
| - double bed | - DSL |
| - shower | - DVD |
| - built-in kitchen | - single bed |
| - dining room | - exclusive |
| - separated toilet | - cable TV |
| - on a high standard | - stereo system |
| - cosy | - nursery |
| - kitchen | - loggia |
| - microwave | - bedroom |
| - daybed | - dishwasher |
| - video | - laundry room |
| - washing machine | - ... |
| - | |

References

Please read our Notes on currency conversion under <http://www.homecompany.de/en/currency-info>

Website synopsis

<http://muenchen.homecompany.de/en/object/AG890216>



Description

Comfortably furnished 3-room apartment with balcony and winter garden in Berg am Laim. 2nd floor with elevator. The living room is furnished with a sofa bed, TV and dining area for up to 4 people; from here access to the balcony. The open kitchen is equipped with everything you need daily, e.g. dishwasher and various kitchen utensils. Bedroom with double bed and large closet; from here access to the winter garden.

Guest room with desk and wardrobe. The bathroom offers a bathtub and washing machine; separate toilet available.

Internet is included in the rent

The apartment is very well located. For example, pharmacies, supermarkets, hairdressers, doctors, bakeries and the post office are within walking distance. Cafes and restaurants are also in the immediate vicinity.

Energy certificate will be provided later.